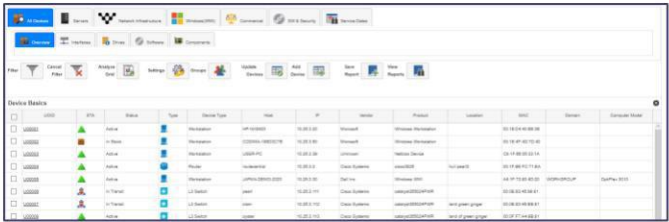


Codima Toolbox | Inventory and Mapping

Redefining The Art of Network Inventory and Network Mapping

What We Discover

The Codima Toolbox Discovery Engine discovers the Network Inventory and asset in your corporate networks without installing any software or agents on them. The database of known managed devices is larger than 20.000 and growing.

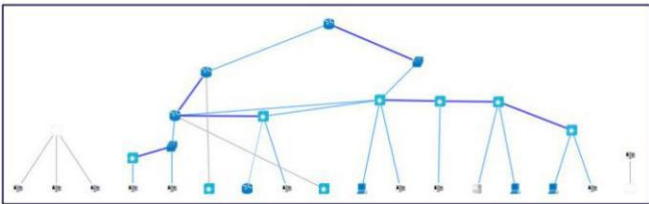
ID	IP	Status	Type	Device Type	Host	IP	Vendor	Product	Location	Model	Discovery Date
1000001	192.168.1.1	Active	Router	Huawei	192.168.1.1	192.168.1.1	Huawei	VRP	192.168.1.1	VRP	2023-10-27 10:00:00
1000002	192.168.1.2	Active	Switch	Huawei	192.168.1.2	192.168.1.2	Huawei	VRP	192.168.1.2	VRP	2023-10-27 10:00:00
1000003	192.168.1.3	Active	Switch	Huawei	192.168.1.3	192.168.1.3	Huawei	VRP	192.168.1.3	VRP	2023-10-27 10:00:00
1000004	192.168.1.4	Active	Switch	Huawei	192.168.1.4	192.168.1.4	Huawei	VRP	192.168.1.4	VRP	2023-10-27 10:00:00
1000005	192.168.1.5	Active	Switch	Huawei	192.168.1.5	192.168.1.5	Huawei	VRP	192.168.1.5	VRP	2023-10-27 10:00:00
1000006	192.168.1.6	Active	Switch	Huawei	192.168.1.6	192.168.1.6	Huawei	VRP	192.168.1.6	VRP	2023-10-27 10:00:00
1000007	192.168.1.7	Active	Switch	Huawei	192.168.1.7	192.168.1.7	Huawei	VRP	192.168.1.7	VRP	2023-10-27 10:00:00
1000008	192.168.1.8	Active	Switch	Huawei	192.168.1.8	192.168.1.8	Huawei	VRP	192.168.1.8	VRP	2023-10-27 10:00:00
1000009	192.168.1.9	Active	Switch	Huawei	192.168.1.9	192.168.1.9	Huawei	VRP	192.168.1.9	VRP	2023-10-27 10:00:00
1000010	192.168.1.10	Active	Switch	Huawei	192.168.1.10	192.168.1.10	Huawei	VRP	192.168.1.10	VRP	2023-10-27 10:00:00

How We Inventory

The Codima Toolbox will do the Network Discovery and produce your Network Inventory of hardware and software. The total picture and data of your Network Inventory is the platform for all that you need and want to know about your network.

What We Map

Codima Toolbox provides instant Networks Maps in Web and Visio for fast overviews and Documentation. The Network Maps can be viewed from remote probes all with live updates.



About Us

Codima delivers in one architecture and one scalable product working from small to the largest network providing all the Network Inventory and Assets information which is mapped on the fly in the Web Map and in Visio for documentation or ITIL purposes and the Network Explorer function provides all the information in one click with all its tailored reports. This improves the user's productivity and keeps the cost down, whether a local network administrator, in a large Datacentre or in a large corporate network.

- Founded 2003
- Over 100 partners
- Many thousands of customers
- All software developed in-house

We are customer focused
We are experienced IT professionals. The customer is the centre of everything we do.

We are committed to excellence
We continuously challenge our solutions and ourselves to deliver outstanding quality and performance.

We exceed expectations
Our performance record speaks for itself.
Ask our customers.

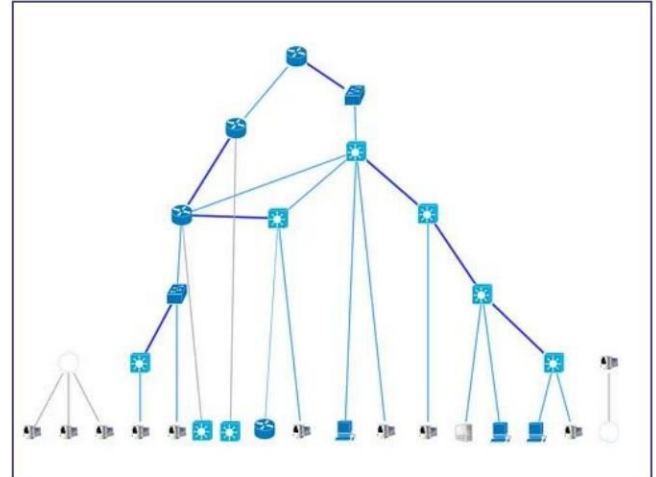
Feature Overview

Network Discovery

Fundamental to Network Mapping and Network Monitoring is the Network Discovery. Learn what devices, software, and links are present. Save Time and Resources through automation.

The Codima Toolbox Discovery feature allows you to find computers, printers, routers, switches, etc. that are on your network and organise the information in an easily understood format. By enabling SNMP and/or WMI, your discoveries can become incredibly detailed and informative.

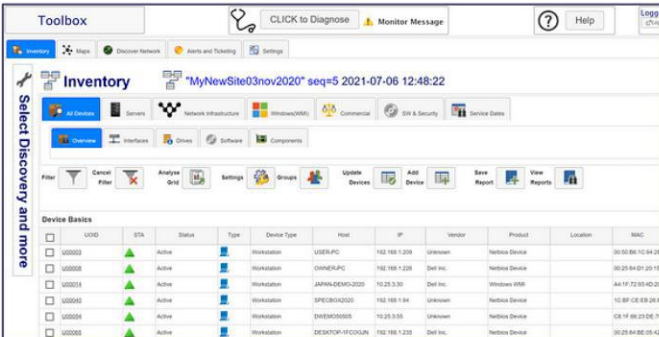
Set up automatic discoveries to avoid the repetitiveness of manually performing network discoveries by using the Discovery Scheduler.



Inventory and Assets

Use Network Discovery and build the Network Inventory and Asset database of devices and software using dynamic searches and user updates.

Codima Toolbox has the ability to manage devices of all types. The Discovery Engine collects information from all network assets that respond to a ping, devices such as PCs, Printer, Servers, Switches, Routers, Firewalls, etc. Toolbox uses information collection methods including SNMP, WMI, WMS, CSP, EDP, Alcatel Interswitch Discovery Protocol, LLDP, SIP Queries, and NetBIOS.

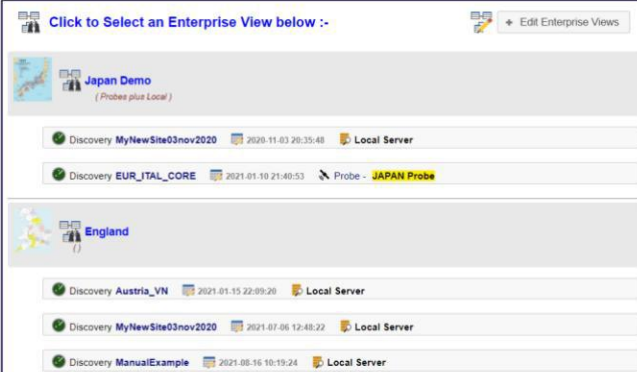


ID	Status	Type	Device Type	Host	IP	Vendor	Product	Location	MAC
U00003	Active	Host	Windows	192.168.1.100	192.168.1.100	HP Inc.	HP ProDesk 600 G1		08:00:2B:1C:94:2E
U00008	Active	Host	Windows	192.168.1.101	192.168.1.101	Dell Inc.	Dell OptiPlex 7020		00:0C:29:84:01:20:15
U00014	Active	Host	Windows	192.168.1.102	192.168.1.102	Dell Inc.	Dell OptiPlex 7020		AA:11:72:93:4D:20:17
U00063	Active	Host	Windows	192.168.1.103	192.168.1.103	HP Inc.	HP ProDesk 600 G1		10:8F:C2:69:24:81
U00064	Active	Host	Windows	192.168.1.104	192.168.1.104	HP Inc.	HP ProDesk 600 G1		C8:1F:8B:23:D8:74
U00065	Active	Host	Windows	192.168.1.105	192.168.1.105	Dell Inc.	Dell OptiPlex 7020		00:0C:29:84:01:20:15

Enterprise View

The feature Enterprise View delivers true scalability of deployment and performance extending Network Discovery, Inventory, Mapping, Monitoring on a large scale. The Enterprise view can cover locations worldwide. It is based on the concept of an Enterprise View which is edited by the user to create a collection of network views enabled by Network Discoveries.

Any Network Discovery you perform can be on the local installation server or on remote Probes worldwide. Enterprise View combines these discoveries anyway the user chooses and produces analytics-based summation of these discoveries or shows them individually.



Location	Discovery Name	Discovery Time	Server/Probe
Japan Demo (Probes plus Local)	Discovery MyNewSite03nov2020	2020-11-03 20:35:48	Local Server
	Discovery EUR_ITAL_CORE	2021-01-10 21:40:53	Probe - JAPAN Probe
England	Discovery Austria_VN	2021-01-15 22:59:26	Local Server
	Discovery MyNewSite03nov2020	2021-07-06 12:48:22	Local Server
	Discovery ManualExample	2021-08-16 10:19:24	Local Server

Codima Toolbox | Inventory and Mapping



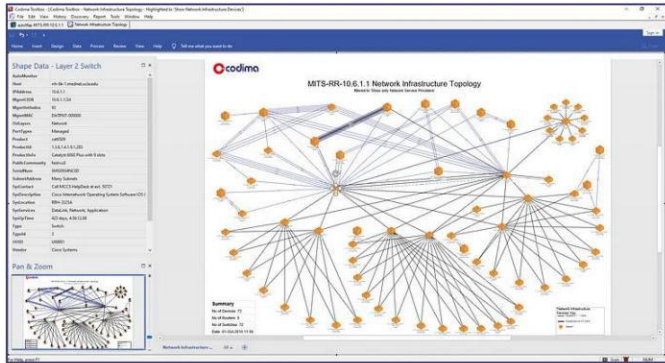
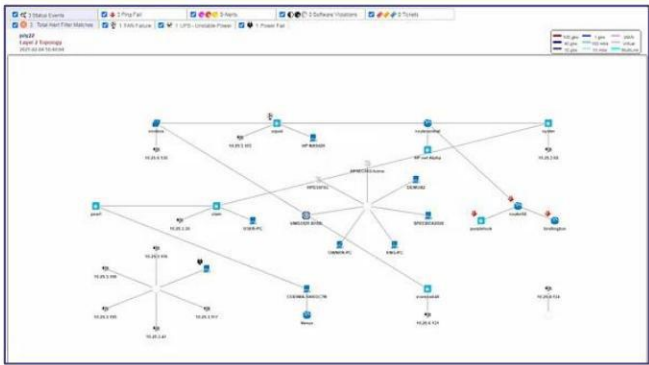
Inventory ITIL

Codima Toolbox ITIL is a very powerful IT Asset Management tool adding details to a Network Discovery that can be used by Accounts, Engineers, Stock control and Network Support. The problem with many existing solutions is bureaucracy, and often need extensive training, by contrast Codima Toolbox is easy to use.

Maps in Web

Topology Maps are created automatically following the completion of network discovery. The Web Network Map is drawn very quickly in the native browser graphics language SVG. The devices can be dragged around, and the connecting links follow in real time. The draw speed is milliseconds for medium size maps and a second or two for very large maps.

Thirteen different network map topologies are created automatically in conjunction with a Network Discovery for ease of use.



Maps in Visio

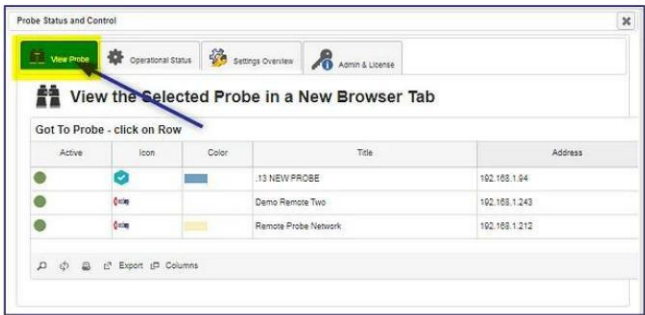
Visio Network Maps use the Microsoft Standard documentation package Visio. It is used by many organisations as a standard presentation and documentation format. Visio is a very flexible drawing package and well suited to documenting simple or complex network topologies.

Thirteen different network map topologies can be created automatically in conjunction with a Network Discovery.

Probes Architecture

Probes are used to extend the geographic reach of the Network Discovery. They can be viewed locally and also as part of Codima Toolbox Enterprise solution used to aggregate reporting.

The probes operate in parallel giving true performance scalability and consistent access speeds. There is no limit to the number of Probes deployed. Additionally, Live Maps can be viewed remotely.



Active	Icon	Color	Title	Address
<input checked="" type="checkbox"/>			13 NEW PROBE	192.168.1.94
<input checked="" type="checkbox"/>			Demo Remote Two	192.168.1.243
<input checked="" type="checkbox"/>			Remote Probe Network	192.168.1.212

Technical Data

Network Discovery

- Support for up to 500,000 devices
- Multi Discovery solution
- Automated Discovery
- Collection methods include SNMP, WMI, CSP, EDP, Alcatel Interswitch Discovery Protocol, LLDP, SIP Queries, and NetBIOS.

Enterprise View

- World-wide network management
- Cross-network analysis

Web Maps

- Automatic map creation
- 13 Network topologies
- Historic map views
- Customizable map layout
- Comparisons to previous maps
- Device filtration
- Front panel view of Switches
- Visible VLAN configurations

Visio Maps

- Full integration with Microsoft Visio
- 13 Network topologies
- Historic Visio Map documentation

Inventory and Assets

- Hardware Inventory
- Software Inventory
- Customizable Web Reports
- Advanced filtering options
- Inventory analysis
- Exportable Graphs
- Historic inventory views

Inventory ITIL

- ITIL configuration
- Custom Fields

System Requirements

- Windows Server 2003, 2008, 2012, 2016, 2019, 2022, Windows 7, 8, 10, 11
- For Visio functionality, one of the following Microsoft Visio versions need to be installed: Microsoft Visio 2013, 2016, 2019
- 4 core processor
- 8Gb 64-bit Memory

Licencing

Product	Product ID	Currently Licensed
Network Inventory Toolbox	codinv	
Network Inventory with Maps in Wep and Visio Toolbox	codinvvmm	Yes
Network Inventory with Maps in Wep and Visio + Alert Ticketing Toolbox	codinvvmma	