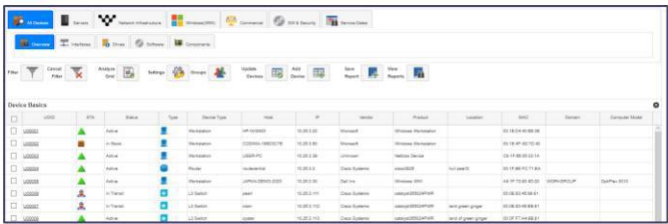


Redefining The Art of Network Inventory and Network Mapping

What We Discover

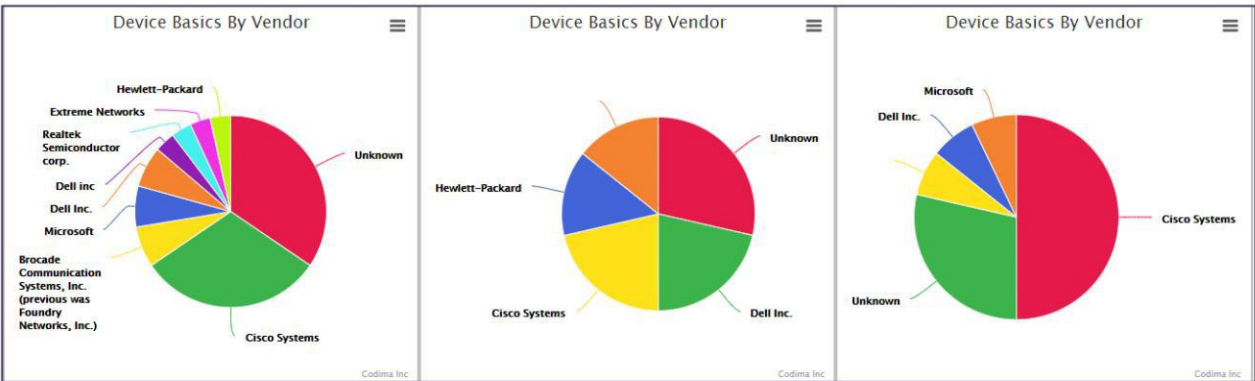
The Codima Toolbox Discovery Engine discovers the Network Inventory and asset in your corporate networks without installing any software or agents on them. The database of known managed devices is larger than 20.000 and growing.

| ID | IP | Status | Type | Device Type | Host | IP | Vendor | Product | Location | Model | Discovery Date |
|---------|-----------|--------|--------|-------------|-----------|-----------|--------|--------------|-----------|--------|----------------|
| 1000001 | 10.0.0.1 | Active | Router | Router | 10.0.0.1 | 10.0.0.1 | Cisco | Cisco 3560-E | 10.0.0.1 | 3560-E | 2013-01-01 |
| 1000002 | 10.0.0.2 | Active | Switch | Switch | 10.0.0.2 | 10.0.0.2 | Cisco | Cisco 3560-E | 10.0.0.2 | 3560-E | 2013-01-01 |
| 1000003 | 10.0.0.3 | Active | Switch | Switch | 10.0.0.3 | 10.0.0.3 | Cisco | Cisco 3560-E | 10.0.0.3 | 3560-E | 2013-01-01 |
| 1000004 | 10.0.0.4 | Active | Switch | Switch | 10.0.0.4 | 10.0.0.4 | Cisco | Cisco 3560-E | 10.0.0.4 | 3560-E | 2013-01-01 |
| 1000005 | 10.0.0.5 | Active | Switch | Switch | 10.0.0.5 | 10.0.0.5 | Cisco | Cisco 3560-E | 10.0.0.5 | 3560-E | 2013-01-01 |
| 1000006 | 10.0.0.6 | Active | Switch | Switch | 10.0.0.6 | 10.0.0.6 | Cisco | Cisco 3560-E | 10.0.0.6 | 3560-E | 2013-01-01 |
| 1000007 | 10.0.0.7 | Active | Switch | Switch | 10.0.0.7 | 10.0.0.7 | Cisco | Cisco 3560-E | 10.0.0.7 | 3560-E | 2013-01-01 |
| 1000008 | 10.0.0.8 | Active | Switch | Switch | 10.0.0.8 | 10.0.0.8 | Cisco | Cisco 3560-E | 10.0.0.8 | 3560-E | 2013-01-01 |
| 1000009 | 10.0.0.9 | Active | Switch | Switch | 10.0.0.9 | 10.0.0.9 | Cisco | Cisco 3560-E | 10.0.0.9 | 3560-E | 2013-01-01 |
| 1000010 | 10.0.0.10 | Active | Switch | Switch | 10.0.0.10 | 10.0.0.10 | Cisco | Cisco 3560-E | 10.0.0.10 | 3560-E | 2013-01-01 |

How We Inventory

The Codima Toolbox will do the Network Discovery and produce your Network Inventory of hardware and software. The total picture and data of your Network Inventory is the platform for all that you need and want to know about your network.



About Us

Codima delivers in one architecture and one scalable product working from small to the largest network providing all the Network Inventory and Assets information which is mapped on the fly in the Web Map and in Visio for documentation or ITIL purposes and the Network Explorer function provides all the information in one click with all its tailored reports. This improves the user's productivity and keeps the cost down, whether a local network administrator, in a large Datacentre or in a large corporate network.

- Founded 2003
- Over 100 partners
- Many thousands of customers
- All software developed in-house

We are customer focused
We are experienced IT professionals. The customer is the centre of everything we do.

We are committed to excellence
We continuously challenge our solutions and ourselves to deliver outstanding quality and performance.

We exceed expectations
Our performance record speaks for itself.
Ask our customers.

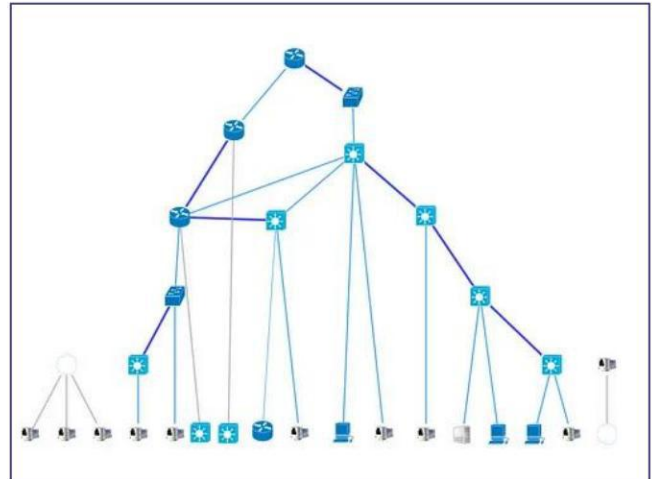
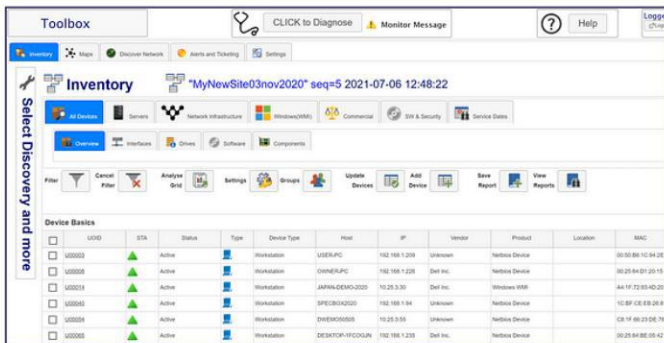
Feature Overview

Network Discovery

Fundamental to Network Mapping and Network Monitoring is the Network Discovery. Learn what devices, software, and links are present. Save Time and Resources through automation.

The Codima Toolbox Discovery feature allows you to find computers, printers, routers, switches, etc. that are on your network and organise the information in an easily understood format. By enabling SNMP and/or WMI, your discoveries can become incredibly detailed and informative.

Set up automatic discoveries to avoid the repetitiveness of manually performing network discoveries by using the Discovery Scheduler.

| ID | Status | Type | Device Type | Host | IP | Vendor | Product | Location | MAC |
|--------|--------|------|-------------|---------------|---------------|-----------|-------------------|----------|-------------------|
| U00003 | Active | Host | Windows | 192.168.1.100 | 192.168.1.100 | HP Inc. | ProLiant DL380 G7 | | 00:0C:29:14:34:20 |
| U00008 | Active | Host | Windows | 192.168.1.101 | 192.168.1.101 | Dell Inc. | PowerEdge R710 | | 00:0C:29:14:34:21 |
| U00014 | Active | Host | Windows | 192.168.1.102 | 192.168.1.102 | Dell Inc. | PowerEdge R710 | | 00:0C:29:14:34:22 |
| U00063 | Active | Host | Windows | 192.168.1.103 | 192.168.1.103 | HP Inc. | ProLiant DL380 G7 | | 00:0C:29:14:34:23 |
| U00064 | Active | Host | Windows | 192.168.1.104 | 192.168.1.104 | HP Inc. | ProLiant DL380 G7 | | 00:0C:29:14:34:24 |
| U00065 | Active | Host | Windows | 192.168.1.105 | 192.168.1.105 | HP Inc. | ProLiant DL380 G7 | | 00:0C:29:14:34:25 |

Enterprise View

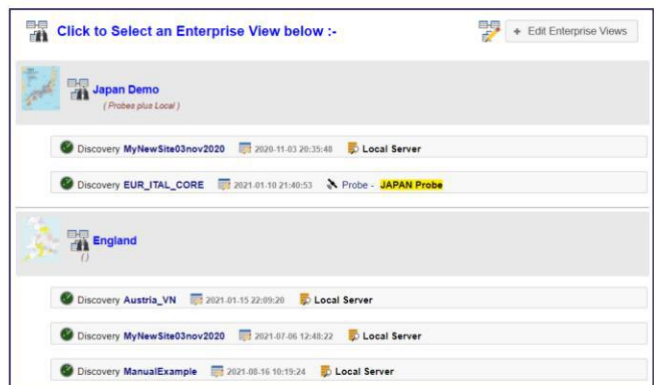
The feature Enterprise View delivers true scalability of deployment and performance extending Network Discovery, Inventory, Mapping, Monitoring on a large scale. The Enterprise view can cover locations worldwide. It is based on the concept of an Enterprise View which is edited by the user to create a collection of network views enabled by Network Discoveries.

Any Network Discovery you perform can be on the local installation server or on remote Probes worldwide. Enterprise View combines these discoveries anyway the user chooses and produces analytics-based summation of these discoveries or shows them individually.

Inventory and Assets

Use Network Discovery and build the Network Inventory and Asset database of devices and software using dynamic searches and user updates.

Codima Toolbox has the ability to manage devices of all types. The Discovery Engine collects information from all network assets that respond to a ping, devices such as PCs, Printer, Servers, Switches, Routers, Firewalls, etc. Toolbox uses information collection methods including SNMP, WMI, WMS, CSP, EDP, Alcatel Interswitch Discovery Protocol, LLDP, SIP Queries, and NetBIOS.



| Location | Discovery | Status | Discovery Time | Server |
|------------|------------------------------|--------|---------------------|---------------------|
| Japan Demo | Discovery MyNewSite03nov2020 | Active | 2020-11-03 20:35:48 | Local Server |
| | Discovery EUR_ITAL_CORE | Active | 2021-01-10 21:40:53 | Probe - JAPAN Probe |
| England | Discovery Austria_VN | Active | 2021-01-15 22:59:26 | Local Server |
| | Discovery MyNewSite03nov2020 | Active | 2021-07-06 12:48:22 | Local Server |
| | Discovery ManualExample | Active | 2021-08-16 10:19:24 | Local Server |

Add a New Device

Summary

UID:

Status: ☐ Active ☐ Inactive

Type:

Host:

IP:

Vendor:

Product:

Location:

MAC:

Serial:

Location

Campus:

Building:

Main:

Branch Office:

Floor:

Commercial

Order Number:

Purchase Price:

Purchase Date:

Depreciation Method:

Residual Value:

Scrap Value:

Lease Supplier:

Maintenance Dates

EOS End of Support:

EOL End of Life:

End of Sale:

Warranty Expires:

End of Lease:

Engineering

Engineer Notes:

Support Contact:

Vendor Support:

Custom Fields

Permanent: ☐

Power Rat:

Environment:

Restricted: ☐

Network Speed:

Device UID to be assigned to this Device:

Inventory ITIL

Codima Toolbox ITIL is a very powerful IT Asset Management tool adding details to a Network Discovery that can be used by Accounts, Engineers, Stock control and Network Support. The problem with many existing solutions is bureaucracy, and often need extensive training, by contrast Codima Toolbox is easy to use.

Probes Architecture

Probes are used to extend the geographic reach of the Network Discovery. They can be viewed locally and also as part of Codima Toolbox Enterprise solution used to aggregate reporting.

The probes operate in parallel giving true performance scalability and consistent access speeds. There is no limit to the number of Probes deployed. Additionally, Live Maps can be viewed remotely.

Probe Status and Control

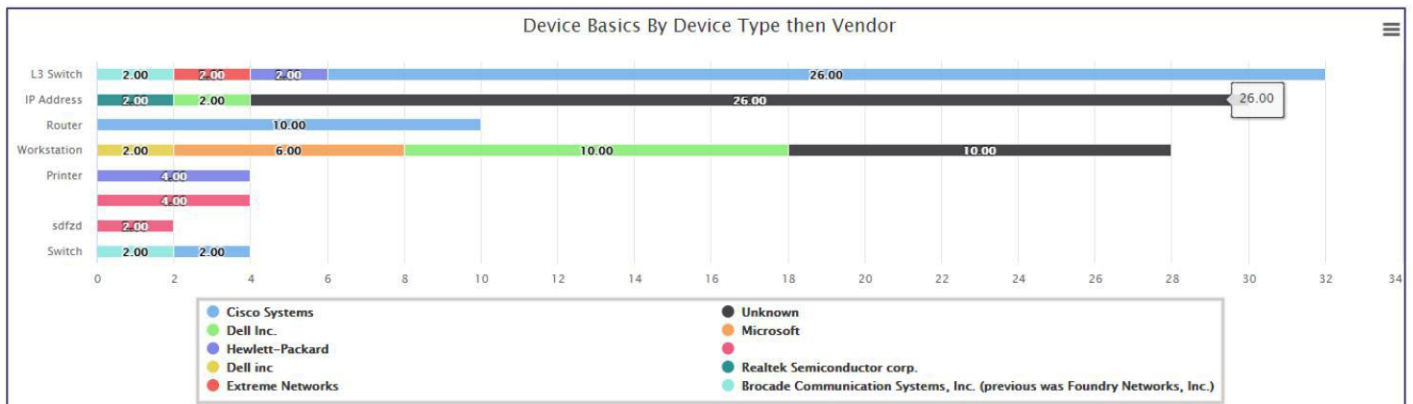
[View Probe](#) [Operational Status](#) [Settings Overview](#) [Admin & License](#)

View the Selected Probe in a New Browser Tab

Got To Probe - click on Row

| Active | Icon | Color | Title | Address |
|-------------------------------------|------|-------|----------------------|---------------|
| <input checked="" type="checkbox"/> | | | 13 NEW PROBE | 102.108.1.94 |
| <input checked="" type="checkbox"/> | | | Demo Remote Two | 102.108.1.243 |
| <input checked="" type="checkbox"/> | | | Remote Probe Network | 102.108.1.212 |

[Export](#) [Columns](#)



Overview

User Updates

Interfaces

Software

Hot Fixes

Anti-Virus

Processes

Services

Hot Fixes

U00000

Active

Workstation

JAPAN-DEMO-2020

10.25.3.30

KB4588878

Update

NT AUTHORITY\SYSTEM

1/13/2021

U00000

Active

Workstation

JAPAN-DEMO-2020

10.25.3.30

KB4537759

Security Update

5/11/2020

U00000

Active

Workstation

JAPAN-DEMO-2020

10.25.3.30

KB4597968

Security Update

5/11/2020

U00000

Active

Workstation

JAPAN-DEMO-2020

10.25.3.30

KB4581800

Security Update

NT AUTHORITY\SYSTEM

9/1/2020

U00000

Active

Workstation

JAPAN-DEMO-2020

10.25.3.30

KB4570334

Security Update

NT AUTHORITY\SYSTEM

9/1/2020

U00000

Active

Workstation

JAPAN-DEMO-2020

10.25.3.30

KB4577268

Security Update

NT AUTHORITY\SYSTEM

10/16/2020

U00000

Active

Workstation

JAPAN-DEMO-2020

10.25.3.30

KB4580325

Security Update

NT AUTHORITY\SYSTEM

10/16/2020

U00000

Active

Workstation

JAPAN-DEMO-2020

10.25.3.30

KB4584229

Update

NT AUTHORITY\SYSTEM

11/2/2020

U00000

Active

Workstation

JAPAN-DEMO-2020

10.25.3.30

KB4588884

Security Update

NT AUTHORITY\SYSTEM

11/10/2020

U00000

Active

Workstation

JAPAN-DEMO-2020

10.25.3.30

KB4593175

Security Update

NT AUTHORITY\SYSTEM

12/9/2020

U00000

Active

Workstation

JAPAN-DEMO-2020

10.25.3.30

KB4598481

Security Update

NT AUTHORITY\SYSTEM

1/13/2021

U00000

Active

Workstation

JAPAN-DEMO-2020

10.25.3.30

KB4598242

Security Update

NT AUTHORITY\SYSTEM

1/13/2021

Codima Toolbox | Inventory

Technical Data

Network Discovery

- Support for up to 500,000 devices
- Multi Discovery solution
- Automated Discovery
- Collection methods include SNMP, WMI, CSP, EDP, Alcatel Interswitch Discovery Protocol, LLDP, SIP Queries, and NetBIOS.

Inventory and Assets

- Hardware Inventory
- Software Inventory
- Customizable Web Reports
- Advanced filtering options
- Inventory analysis
- Exportable Graphs
- Historic inventory views

Inventory ITIL

- ITIL configuration
- Custom Fields

Enterprise View

- World-wide network management
- Cross-network analysis

System Requirements

- Windows Server 2003, 2008, 2012, 2016, 2019, 2022, Windows 7, 8, 10, 11
- 4 core processor
- 8Gb 64-bit Memory

Licencing

| Product | Product ID | Currently Licensed |
|--|------------|--------------------|
| Network Inventory Toolbox | codinv | Yes |
| Network Inventory with Maps in Wep and Visio Toolbox | codinvvmm | |
| Network Inventory with Maps in Wep and Visio + Alert Ticketing Toolbox | codinvmma | |